



# **AYR MINOR SOFTBALL ASSOCIATION**

## **Emergency Action Plan**

**Victoria Park**

**Ayr, ON**

**Ken Sherk, AMSA Director of Player Development**

---

**AUTHOR**

**April 13, 2014**

---

**ORIGINAL DATE**

**May 7, 2017**

---

**LAST REVISED DATE**



# Emergency Action Plan for Victoria Park Ayr, ON

**Emergency phone numbers: 9-1-1 for all emergencies**

Charge Person:	
Call Person:	
Control Person:	
Cell phone number of coach:	
Cell phone number of assistant coach:	
Phone number of home facility:	

<b>Address and location of facility:</b>	
Park Name:	Victoria Park
Address:	75 Rose St.
City:	Ayr, ON
Main Entrance:	67 Church St.
Secondary Entrance:	75 Rose St.



In the event of rain players and spectators may assemble in the bandshell adjacent to Sage Field.



In the case of lightning all players and spectators are advised to move to their vehicles. There is no recommended safe location in the park for lightning conditions.



# Introduction

## What is an Emergency Action Plan (EAP)?

As the coach you are responsible for the safety and welfare of your players. An Emergency Action Plan (EAP) is a plan designed by coaches to assist them in responding to emergency situations. The idea behind having such a plan prepared in advance is that it will help you respond in a responsible and clear-headed way if an emergency occurs.

An EAP should be prepared for the facility or site where you normally hold practices and for any facility or site where you regularly host competitions. For away competitions, ask the host team or host facility for a copy of their EAP.

Your EAP should be prepared at the start of the season, not when an accident occurs.

An EAP can be simple or elaborate but should cover the following items:

1. Designate in advance who is in charge in the event of an emergency (as the coach this may very well be you).
2. Have a cell phone with you and make sure the battery is fully charged. If this is not possible, find out exactly where a telephone is located. Have spare change in case you need to use a pay phone.
3. Have emergency telephone numbers with you (facility manager, fire, police, ambulance) as well as contact numbers (parents/guardians, next of kin, family doctor) for the participants.
4. It is recommended to have a medical profile for each participant on hand so this information can be provided to emergency medical personnel. This information will be on your team list.
5. Prepare directions to provide to Emergency Medical Services (EMS) to enable them to reach the site as rapidly as possible. You may want to include information such as the closest major intersection, one way streets, or major landmarks.
6. Have a first aid kit accessible and properly stocked at all times (all coaches are strongly encouraged to pursue first aid training).
7. Designate a "call person" (the person who makes contact with medical authorities and otherwise assists the person in charge) in advance. Be sure that your call person can give emergency vehicles precise instructions to reach your facility or site.



## Emergency Action Plan Checklist

Follow and complete the check list for each game or practice. Your EAP may not change too much during the season.

Some of the information required below will be provided with this handout such as directions to the ball diamonds.

Also your player or team list will have a list of contact names and phone numbers. Do not always assume a parent will be at the game or practice

### ***Access to telephone***

- ☐ Cell phone, battery well charged
- ☐ Practices
- ☐ Home venues
- ☐ Away venues
- ☐ List of emergency phone numbers (home competitions)
- ☐ List of emergency numbers (away competitions)
- ☐ Change available to make phone calls from a pay phone

### ***Directions to access the site***

- ☐ Accurate directions to the site (practice)
- ☐ Accurate directions to the site (home competitions)
- ☐ Accurate directions to the site (away competitions)

### ***Participant information***

- ☐ Personal profile forms
- ☐ Emergency contacts
- ☐ Medical profiles

### ***Personnel information***

- ☐ Person in charge is identified
- ☐ Call person is identified
- ☐ Assistants (charge and call persons) are identified

✓ *The medical profile of each participant should be up to date and located in the first aid kit.*

✓ *A first aid kit must be accessible at all times and must be checked regularly.*



## How to Activate your Emergency Action Plan:

Prior to any home game three roles must be designated:

1. Charge person
2. Call person
3. Control Person

### ***1. Charge Person***

This person should ideally have Emergency First-Aid training, knowledge of sports related injuries and how the Emergency Action Plan works. This could very well be the coach.

Responsibilities for the Charge Person include the following:

#### Prior to the game

- Being familiar with players past medical history.
- Assuring the First-Aid kit is complete and available at the game site.
- Providing a cellular phone or knowing the location of the nearest phone.
- Designating a **Call Person**

#### In the event of an injury to any player, official or spectator

- Assess the situation -seriousness of injury, need for assistance, etc.
- Provide First-Aid care to injured party. (See Guidelines -Charge Person)
- Instruct Call Person to activate EMS if required.
- Stay with injured person until injury is treated or ambulance arrives.
- Complete an Injury Treatment Report for the association records if necessary.



## ***2. Call Person***

This person is to be designated by the Charge Person before the game begins. It could be your assistant coach or a parent.

Responsibilities for the Call Person include the following:

- Locate cellular phone and call **\*911** when instructed to do so.
- Specify that this is a medical emergency and you require an ambulance.
- Give the number of the phone you are calling from.
- Give the location of the playing field.
- Give the dispatcher details of the injury, be prepared to answer the following questions about the injured person:
  - Is the person breathing normally on his/her own?
  - Bleeding -from where and how much?
  - Level of consciousness
  - First-Aid being provided -CPR, Direct pressure, Ice pack
  - Approximate age
  - Gender (Male or Female)
- Ask how long it will take for the ambulance to arrive.
- Designate a person to go to the gate and direct the ambulance to the field.
- Return to the **Charge Person** and relay any instructions from the EMS dispatcher, including the
- ETA of the ambulance.
- Be prepared to call **\*911** again if the person's condition changes.

## ***3. Control Person***

This person is also to be designated by the Charge Person before the game begins. Head coaches are typically good choices for such a role.

Responsibilities for the Control Person include the following:

- Keeping the rest of the crowd and/or players under control, and away from the injured player
- Making sure he/she meets the ambulance at an entrance if necessary or designates a person to do so
- Aids in any other assistance necessary



## Steps to Follow When an Injury Occurs

Note: It is recommended that emergency situations be simulated during practice to familiarize coaches and athletes with the steps below.

### ***Charge Person:***

1. Initially when coming into contact with the injured athlete, stay calm, take control and assess the situation.
2. Instruct all other players and bystanders to leave the injured player alone.
3. If the player is bleeding take Universal Precautions to prevent disease transmission before treating the injury. Wear Barriers for your own protection.
4. Do not move the player. Remember - If the player can not initiate a movement voluntarily, do not move the body part for the player. Leave the players equipment in place.
5. Evaluate the injury. Once you have assessed the severity, decide whether to call for further assistance.
  - a. Is not breathing -**call EMS**
  - b. Does not have a pulse -**call EMS**
  - c. Is bleeding profusely -**call EMS**
  - d. Has impaired consciousness -**call EMS**
  - e. Has injured the back, neck, or head -**call EMS**
  - f. Has a visible major trauma to a limb -**call EMS**
  - g. Cannot move his or her arms or legs or has lost feeling in them -**call EMS**
6. If an ambulance is required, notify your **Call Person** and give a brief explanation of the injury and the care being given and tell the person to call for the ambulance.
7. If an ambulance is not required, then decide what action is to be taken to remove the injured player from the playing field, without aggravating the injury.
8. When waiting for the ambulance, observe the player carefully for any change in his/her condition or level of consciousness, and reassure them that professional help is on the way.
9. Do not be forced or intimidated into moving an injured player unnecessarily just to continue the game.

### ***Call Person:***

1. Know the location of the cellular phone (and how to operate it) or the location of land phones available for placing a call in an emergency. This may take some planning in remote locations or at fields with which you are not familiar. Do not rely on others to find these for you after an emergency has occurred.
2. Prepare a list of emergency numbers to be used if required (ambulance, fire, police, and doctors) or check, upon arrival, that the area has 911 services.
3. Know the name of the location and the directions to the field where the injury has occurred. This will save time and confusion particularly if the location has several playing areas.

### ***Control Person:***

1. Control the crowd
2. Assist Charge or Call person where needed



## Nearest hospitals:

HOSPITAL NAME: **Cambridge Memorial Hospital (Emergency open 24/7)**

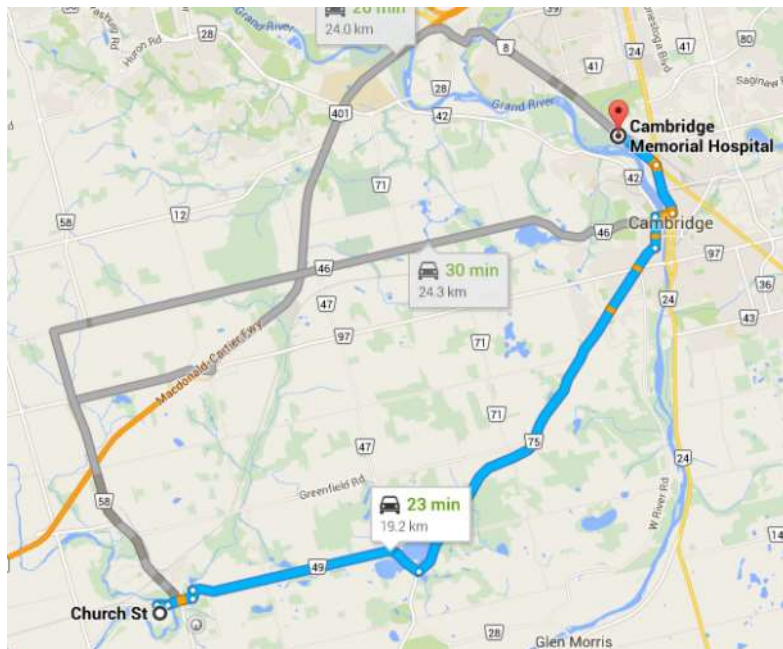
ADDRESS: 700 Coronation Blvd.

CITY: Cambridge, Ontario, N1R 3G2

TELEPHONE: 519-621-2330 (Main), 519-621-2333 (Automated)

DISTANCE FROM PARK: 19 km

EMERGENCY ENTRANCE: 1844 Coronation Blvd. (Turn left from Coronation and immediate left to Emergency entrance)



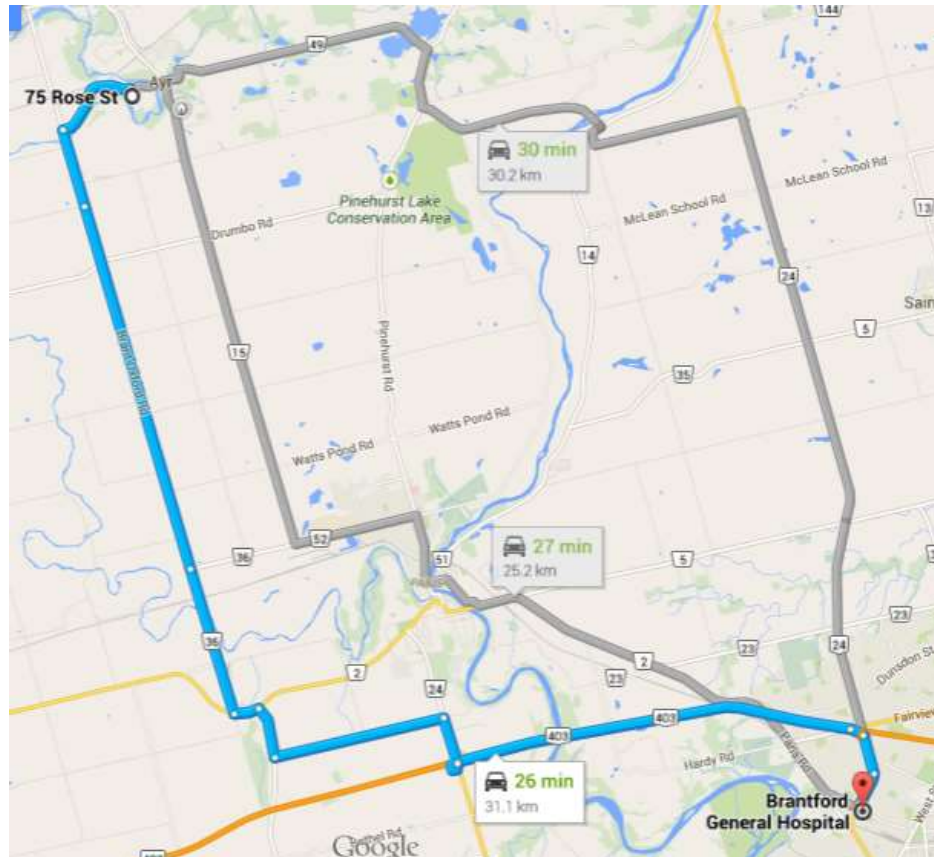


HOSPITAL NAME: **Brantford General Hospital (Emergency open 24/7)**

ADDRESS: 200 Terrace Hill Street  
CITY: Brantford, ON, N3R 1G9  
TELEPHONE: 519-751-5544

DISTANCE FROM PARK: 25 km

EMERGENCY ENTRANCE: 200 Terrace Hill Street



## EAP Appendix A

### Other Facility Locations

Information in this section is provided for reference according to the best information available at the time. Team personnel should always confirm addresses and phone numbers for parks and hospitals before attending any facility.

### Area Hospitals

City	Hospital	Address
<b>Brantford</b>	Brantford General Hospital	200 Terrace Hill St, Brantford, ON
<b>Cambridge</b>	Cambridge Memorial Hospital	700 Coronation Blvd., Cambridge, ON
<b>Clinton</b>	Clinton Public Hospital	98 Shipley St, Clinton, ON
<b>Exeter</b>	South Huron Hospital	24 Huron St W, Exeter, ON
<b>Hagersville</b>	West Haldimand General Hospital	75 Parkview Rd, Hagersville, ON
<b>Hamilton</b>	Hamilton General Hospital	237 Barton St E, Hamilton, ON
<b>Ingersoll</b>	Alexandra Hospital	29 Noxon St, Ingersoll, ON
<b>Kitchener</b>	Grand River Hospital	901 King St W, Kitchener, ON
<b>Kitchener</b>	St. Mary's General Hospital	911 Queen's Blvd, Kitchener, ON
<b>Listowel</b>	Listowel Memorial Hospital	255 Elizabeth St E, Listowel, ON
<b>London</b>	University Hospital - London Health Sciences Centre	339 Windermere Rd, London, ON
<b>London</b>	Victoria Hospital - London Health Sciences Centre	800 Commissioners Rd E, London, ON
<b>Oakville</b>	OakvilleTrafalgar Memorial Hospital	3001 Hospital Gate, Oakville, ON
<b>Paris</b>	Willett Hospital	238 Grand River St N, Paris, ON
<b>Simcoe</b>	Norfolk General Hospital	365 West St, Simcoe, ON
<b>St Marys</b>	St Marys Memorial Hospital	267 Queen St W, St. Marys, ON
<b>Stratford</b>	Stratford General Hospital	46 General Hospital Dr, Stratford, ON
<b>Strathroy</b>	Strathroy Middlesex General Hospital	395 Carrie St, Strathroy, ON
<b>Tillsonburg</b>	Tillsonburg District Memorial Hospital	167 Rolph St, Tillsonburg, ON
<b>Woodstock</b>	Woodstock General Hospital	310 Juliana Dr, Woodstock, ON



## Ball Parks and Training Facilities

Ball Park	Address
Ayr - Lions Park	1189 Northumberland St., Ayr, ON
Ayr - Pipers Glen	81 Nith River Way, Ayr, ON
Ayr - Victoria Park	24 Rose Street, Ayr, ON
Ayr Community Centre (ACC, old arena)	7 Church Street, Ayr, ON
Ayr, Schmidt Park	53 Hilltop Drive, Ayr, ON
Ailsa Craig	158 Annie Ada Shipley St., Ailsa Craig, ON
Ancaster – Community Centre	385 Jerseyville Rd W, Ancaster, ON
Baden – Beck Park	215 Snyders Road East, Baden, ON
Burgessville	605 Main St S., Burgessville, ON
Caledonia	100 Haddington St, Caledonia, ON
Cambridge - Churchill	200 Christopher Dr., Cambridge, ON
Cambridge - Lincoln	41 Vimy Street, Cambridge, ON
Drumbo Park	44 Centre St., Drumbo, ON
Dundas - Driving Park	71 Cross St, Dundas, ON L9H 2R5, Canada
Elmira – Lions Park	220 Barnswallow Dr., Elmira, ON
Embro - Matheson Park	146 Argyle St, Embro, ON
Exeter - Precious Blood Park	144 Sanders St W
Freelton – Centennial Heights Park	12 Karendale Cres., Freelton, ON
Fullarton	2999 Rd 163 A, Fullarton, ON
Ingersoll – Garnett Elliot	226 Wonham St N, Ingersoll, ON
Innerkip	104 Blandford Street, Innerkip, ON
Jarvis	James St., Jarvis, ON
Kitchener – Core Lifestyle and Rec Complex	401 New Dundee Rd., Kitchener, ON
Kitchener - Joe Thompson Park	14 Bloomingdale Rd S., Kitchener, ON
Kitchener - Wilson Park	72 Wilson Avenue, Kitchener, ON
London - Stronach Park	1221 Sandford St., London, ON
Langton	30 Albert St, Norfolk, ON
Lynden	206 Lynden Road, Lynden, ON
Lynden	4057 Governors Rd., Lynden, ON
Milverton - Perth East Rec Complex	30 Temperance St, Milverton, ON
Mitchell – Keterson Park (Arena)	185 Wellington St, Mitchell
Mt Elgin	333204 Plank Line, Mt. Elgin, ON
New Hamburg – Norm Hill Park (Fairgrounds)	251 Jacob St., New Hamburg, ON
Nor/Ott - Norwich Diamond	59 Stover Street South, Norwich, ON
Nor/Ott - Otterville Diamond	3 North Street E., Otterville, ON
Paris - Lions Park	90 Laurel Street, Paris, ON
Paris - Green Lane	185 Green Lane, Brant, ON



<b>Ball Park</b>	<b>Address</b>
<b>Paris - Syl Apps Community Centre</b>	51 William St, Brant, ON
<b>Plattsville</b>	68 Mill St., Plattsville, ON
<b>Princeton Ballpark</b>	25 Elgin St. W., Princeton, ON
<b>St. George - Arena</b>	7 Gaukel Dr, Saint George, ON
<b>St. George - King William</b>	49 King William St., Saint George, ON
<b>St. George - Harrisburg</b>	17 German School Rd., Saint George, ON
<b>St. Marys - Solis Park</b>	317 James St. S., St. Marys, ON
<b>St. Marys – Teddys Field</b>	285 Water St S, St. Marys, ON
<b>Shakespeare</b>	3976 Galt St., Perth East, ON
<b>Sheffield</b>	1225 Sheffield Rd., Hamilton, ON
<b>Springfield</b>	12105 Whittaker Rd., Springfield, ON
<b>Springford</b>	432 Main St. West, Otterville, ON
<b>Stoney Creek – Ferris Park</b>	342 Hemlock Ave, Stoney Creek, ON
<b>Stoney Creek – Valley Park</b>	970 Paramount Dr, Stoney Creek
<b>Sweaburg - Lions Park</b>	474265 County Rd 41, Sweaburg, ON
<b>Sweaburg - Tommy Williams Park</b>	474465 Dodge Line, Sweaburg, ON
<b>Tavistock - Optimist Park</b>	296 Woodstock St S., Tavistock, ON
<b>Tavistock - Queens Park</b>	1 Adam St., Tavistock, ON
<b>Waterdown – Memorial Park</b>	266 Main St N, Waterdown, ON
<b>Waterloo – Hillside Park</b>	352 Marsland Dr., Waterloo, ON
<b>Zurich</b>	28 Main St., Zurich, ON



**Ayr**

Ayr Community Centre (old arena)  
7 Church Street, Ayr, ON

**Nearest Hospitals:**

Cambridge Memorial Hospital (19 km)  
700 Coronation Blvd., Cambridge, On  
519-621-2330

Brantford General Hospital (25 km)  
200 Terrace Hill St, Brantford, ON  
1 519-751-5544

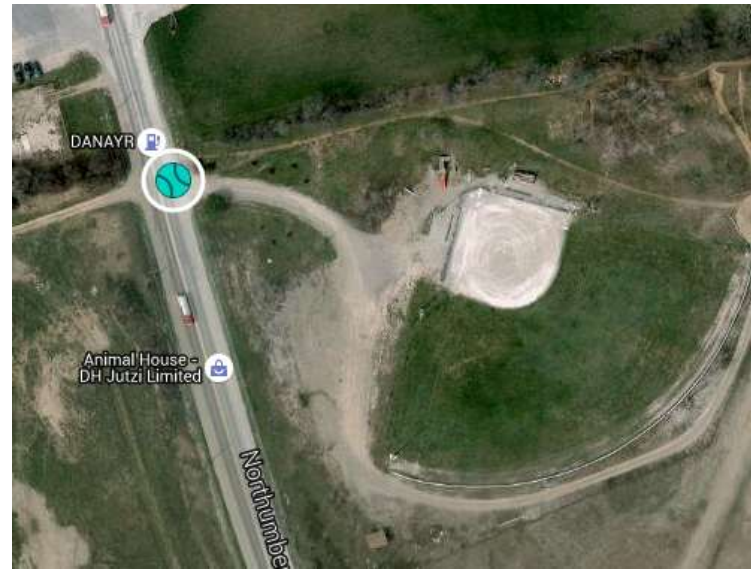
**Ayr**

Lions Park  
1189 Northumberland St., Ayr, ON

**Nearest Hospitals:**

Cambridge Memorial Hospital (19 km)  
700 Coronation Blvd., Cambridge, On  
519-621-2330

Brantford General Hospital (25 km)  
200 Terrace Hill St, Brantford, ON  
1 519-751-5544





**Ayr**

Pipers Glen Park  
81 Nith River Way, Ayr, ON

**Nearest Hospitals:**

Cambridge Memorial Hospital (19 km)  
700 Coronation Blvd., Cambridge, ON  
519-621-2330

Brantford General Hospital (25 km)  
200 Terrace Hill St, Brantford, ON  
1 519-751-5544

**Ayr**

Schmidt Park  
53 Hilltop Drive, Ayr, ON

**Nearest Hospitals:**

Cambridge Memorial Hospital (19 km)  
700 Coronation Blvd., Cambridge, ON  
519-621-2330

Brantford General Hospital (25 km)  
200 Terrace Hill St, Brantford, ON  
1 519-751-5544



**Ayr**

Victoria Park  
75 Rose St., Ayr, ON

**Nearest Hospitals:**

Cambridge Memorial Hospital (19 km)  
700 Coronation Blvd., Cambridge, ON  
519-621-2330

Brantford General Hospital (25 km)  
200 Terrace Hill St, Brantford, ON  
1 519-751-5544

**Ailsa Craig**

Ailsa Craig Park  
158 Annie Ada Shipley St., Ailsa Craig, ON

**Nearest Hospitals:**

Strathroy Middlesex General Hospital (24 km)  
395 Carrie St, Strathroy, ON  
1-519-245-5295

University Hospital (34 km)  
1221 Sandford St, London, ON  
1 519-685-8500

Victoria Hospital (42 km)  
800 Commissioners Rd E, London, ON  
1 519-685-8500



## Ancaster

Community Centre

385 Jerseyville Rd W, Ancaster, ON

### Nearest Hospitals:

Hamilton General Hospital (16 km)

237 Barton St E, Hamilton, ON

1 905-521-2100





**Baden**

Sir Adam Beck Park  
215 Snyders Road East, Baden, ON

**Nearest Hospitals:**

St. Mary's Hospital (14 km)

911 Queen's Blvd, Kitchener, ON

1 519-744-3311

Stratford General Hospital (32 km)

46 General Hospital Dr, Stratford, ON

1 519-272-8210

**Burgessville**

W.P. (Ducky) Dennis Athletic Park  
605 Main St S., Burgessville, ON

**Nearest Hospitals:**

Woodstock General Hospital (17 km)

308 Juliana Dr, Woodstock, ON

1 519-421-4211

Alexandra Hospital (21 km)

29 Noxon St, Ingersoll, ON

1 519-485-1700



## Caledonia

Haldimand County Community Centre  
100 Haddington St, Caledonia, ON

### Nearest Hospitals:

Hamilton General Hospital (25 km)  
237 Barton St E, Hamilton, ON  
1 905-521-2100

Brantford General Hospital (35 km)  
200 Terrace Hill St, Brantford, ON  
1 519-751-5544

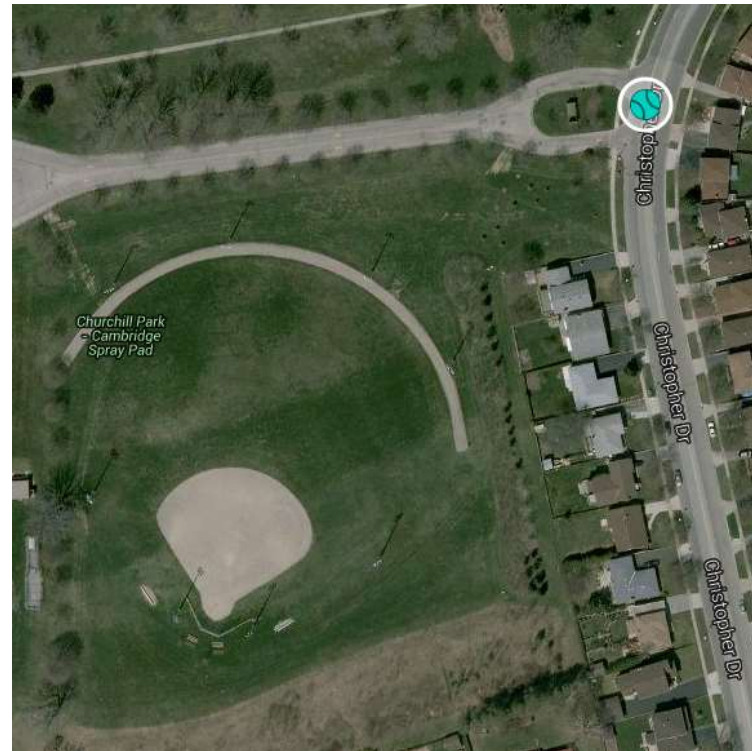


## Cambridge

Churchill Park  
200 Christopher Dr., Cambridge, ON

### Nearest Hospitals:

Cambridge Memorial Hospital (6 km)  
700 Coronation Blvd., Cambridge, On  
519-621-2330



### Cambridge

Lincoln Park

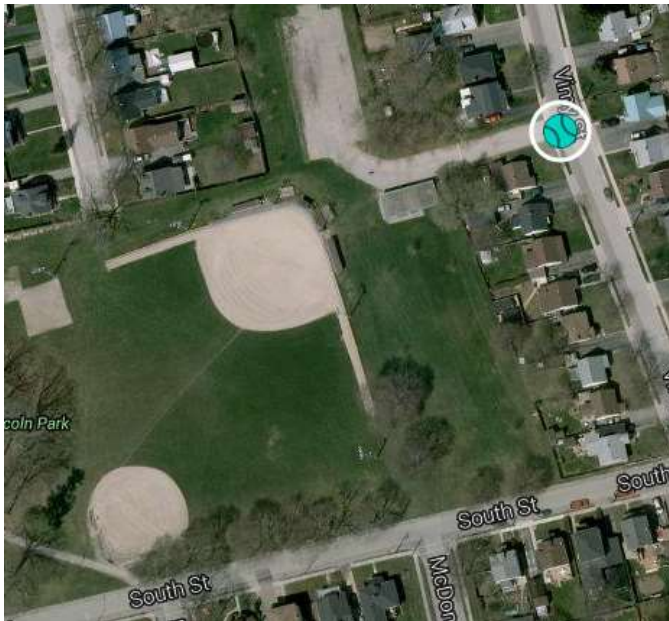
200 Christopher Dr., Cambridge, ON

#### Nearest Hospitals:

Cambridge Memorial Hospital (6 km)

700 Coronation Blvd., Cambridge, ON

519-621-2330



### Drumbo

Innerkip Park

200 Christopher Dr., Cambridge, ON

#### Nearest Hospitals:

Woodstock General Hospital (26 km)

310 Juliana Dr, Woodstock, ON

1 519-421-4211

Brantford General Hospital (33 km)

200 Terrace Hill St, Brantford, ON

1 519-751-5544



**Dundas**

Dundas Driving Park  
71 Cross St, Dundas, ON

**Nearest Hospitals:**

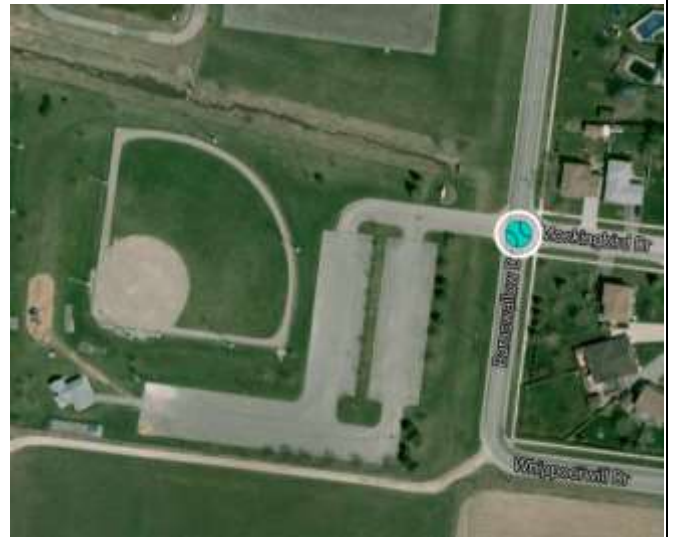
Hamilton General Hospital (5 km)  
237 Barton St E, Hamilton, ON  
(905) 521-2100

**Elmira**

Lions Park  
220 Barnswallow Dr., Elmira, ON

**Nearest Hospitals:**

Grand River Hospital (20 km)  
901 King St W, Kitchener, ON  
St. Mary's Hospital (28 km)  
911 Queen's Blvd, Kitchener, ON  
1 519-744-3311





**Embro**

Matheson Park  
146 Argyle St., Embro, ON

**Nearest Hospitals:**

Alexandra Hospital (17 km)  
29 Noxon St, Ingersoll, ON  
1 519-485-1700

Woodstock General Hospital (19 km)  
310 Juliana Dr, Woodstock, ON  
1 519-421-4211

**Exeter**

Precious Blood Diamond  
133 Sanders Street W, Exeter, ON

**Nearest Hospitals:**

South Huron Hospital (700m) – Restricted hours  
24 Huron St W, Exeter, ON  
519-235-2700

Clinton General Hospital (32 km)  
98 Shipley St, Clinton, ON  
1 519-482-3447

University Hospital (44 km)  
1221 Sandford St, London, ON  
1 519-685-8500



**Freelton**

Centennial Heights Park  
12 Karendale Cres., Freelton, ON

**Nearest Hospitals:**

Hamilton General Hospital (24 km)  
237 Barton St E, Hamilton, O  
(905) 521-2100

Cambridge Memorial Hospital (26 km)  
700 Coronation Blvd., Cambridge, On  
519-621-2330

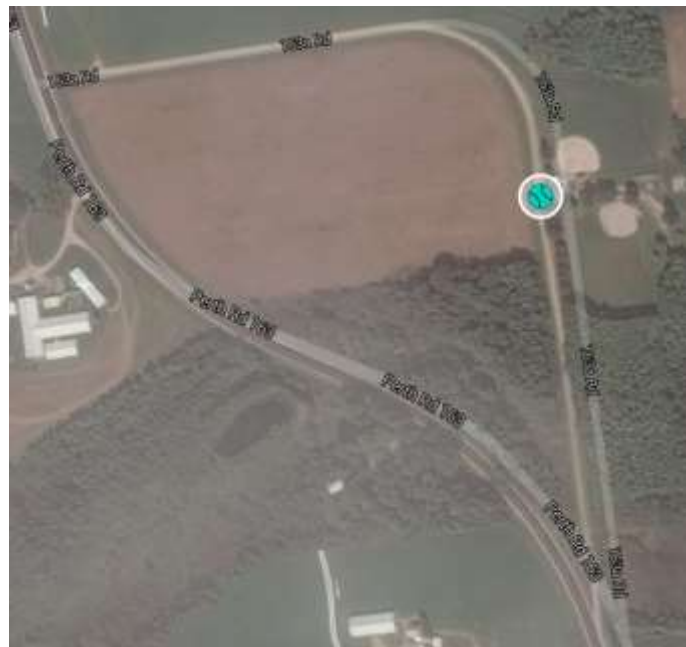
**Fullarton**

Fullarton Ball Park  
2999 Rd 163 A, Fullarton, ON

**Nearest Hospitals:**

Stratford General Hospital (26 km)  
46 General Hospital Dr, Stratford, ON  
1 519-272-8210

South Huron Hospital (26 km) – Restricted hours  
24 Huron St W, Exeter, ON  
519-235-2700



**Ingersoll**

Garnett Elliot Park

226 Wonham St N, Ingersoll, ON

**Nearest Hospitals:**

Alexandra Hospital (3 km)

29 Noxon St, Ingersoll, ON

1 519-485-1700

Woodstock General Hospital (17 km)

310 Juliana Dr, Woodstock, ON

1 519-421-4211

**Innerkip**

Innerkip Park

200 Christopher Dr., Cambridge, ON

**Nearest Hospitals:**

Woodstock General Hospital (17 km)

310 Juliana Dr, Woodstock, ON

1 519-421-4211

Alexandra Hospital (29 km)

29 Noxon St, Ingersoll, ON

1 519-485-1700





## Jarvis

James St, Jarvis, ON

### Nearest Hospitals:

West Haldimand General Hospital (10 km)

75 Parkview Rd, Hagersville, ON  
(905) 768-3311

Norfolk General Hospital (19 km)

327 West St, Simcoe, ON  
1 519-426-0130



## Kitchener

Wilson Park

72 Wilson Avenue, Kitchener, ON

### Nearest Hospitals:

St. Mary's Hospital (7 km)

911 Queen's Blvd, Kitchener, ON  
1 519-744-3311

Cambridge Memorial Hospital (13 km)

700 Coronation Blvd., Cambridge, On  
519-621-2330





## Kitchener

Joe Thompson Park

14 Bloomingdale Rd S., Kitchener, ON

Nearest Hospitals:

St. Mary's Hospital (6 km)

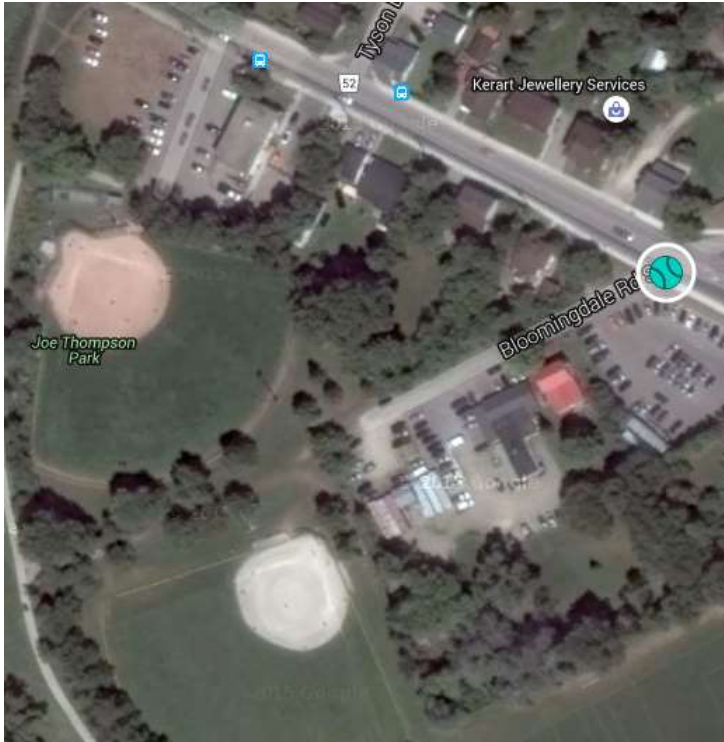
911 Queen's Blvd, Kitchener, ON

1 519-744-3311

Cambridge Memorial Hospital (21 km)

700 Coronation Blvd., Cambridge, On

519-621-2330



## Kitchener

**Core Lifestyle and Rec Complex**

401 New Dundee Rd., Kitchener, ON

Nearest Hospitals:

Cambridge Memorial Hospital (11 km)

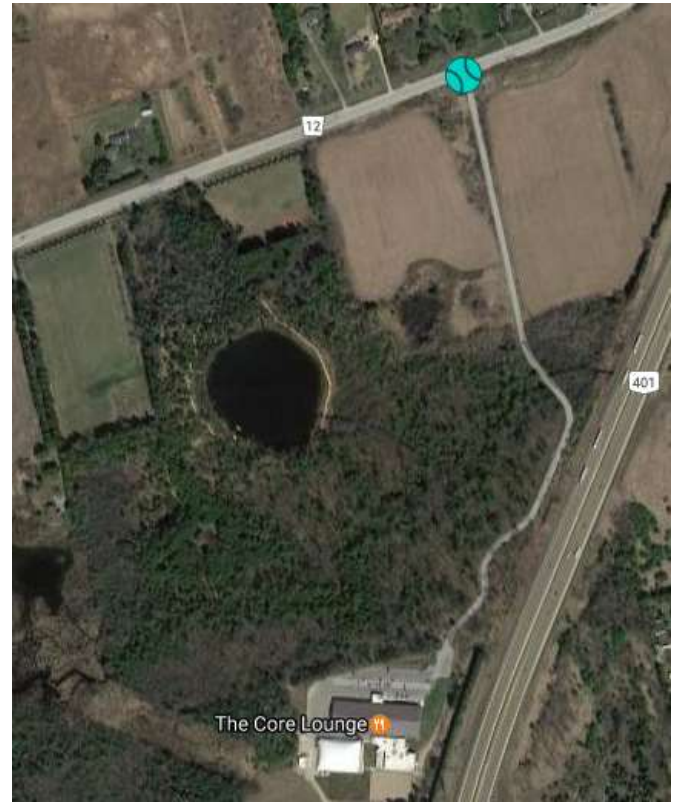
700 Coronation Blvd., Cambridge, On

519-621-2330

St. Mary's Hospital (15 km)

911 Queen's Blvd, Kitchener, ON

1 519-744-3311



## Langton

Langton Community Centre  
30 Albert St, Norfolk, ON

### Nearest Hospitals:

Tillsonburg District Memorial Hospital (22 km)

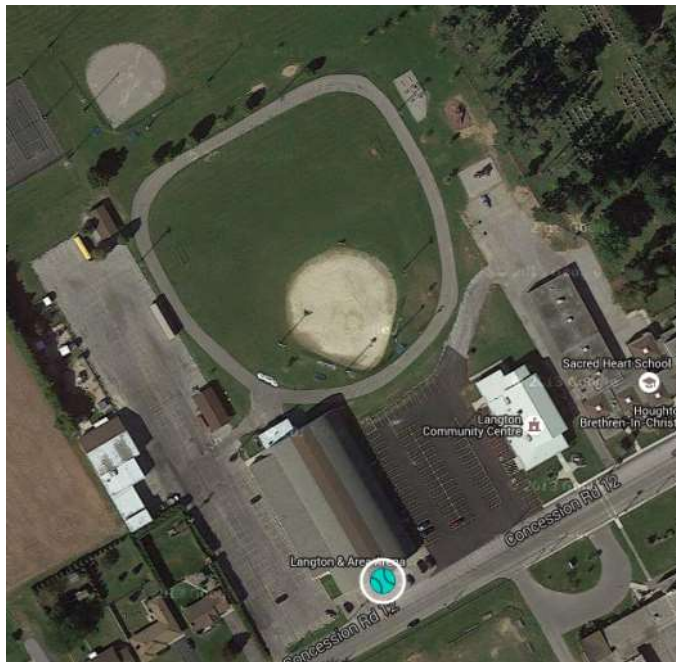
167 Rolph St, Tillsonburg, ON

1 519-842-3611

Norfolk General Hospital (26 km)

327 West St, Simcoe, ON

1 519-426-0130



## London

Stronach Park  
1221 Sandford St., London, ON

### Nearest Hospitals:

University Hospital (8 km)

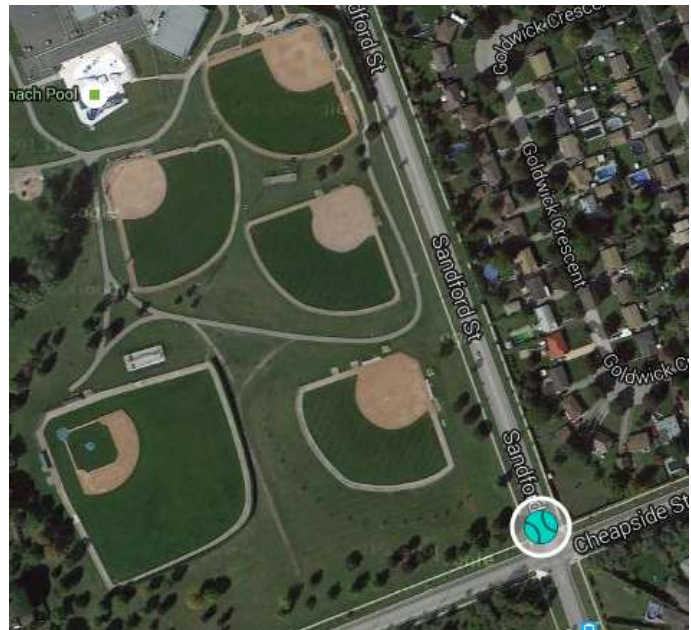
1221 Sandford St, London, ON

1 519-685-8500

Victoria Hospital (10 km)

800 Commissioners Rd E, London, ON

1 519-685-8500



## Lynden

Lynden Legion Park

206 Lynden Road, Lynden, ON

### Nearest Hospitals:

Brantford General Hospital (17 km)  
200 Terrace Hill St, Brantford, ON  
1 519-751-5544

Hamilton General Hospital (33 km)  
237 Barton St E, Hamilton, ON  
1 905-521-2100



## Lynden

Lynden Park

4057 Governors Rd., Lynden, ON

### Nearest Hospitals:

Brantford General Hospital (17 km)  
200 Terrace Hill St, Brantford, ON  
1 519-751-5544

Hamilton General Hospital (33 km)  
237 Barton St E, Hamilton, ON  
1 905-521-2100





**Mitchell**

Mitchell Community Centre  
185 Wellington St, Mitchell, ON

**Nearest Hospitals:**

Stratford General Hospital (28 km)  
46 General Hospital Dr, Stratford, ON  
1 519-272-8210

Clinton General Hospital (34 km)  
98 Shipley St, Clinton, ON  
1 519-482-3447

**Milverton**

Perth East Rec Complex  
40 Temperance St, Milverton, ON

**Nearest Hospitals:**

Listowel Memorial Hospital (27 km)  
255 Elizabeth St E, Listowel, ON  
1 519-291-3120

Stratford General Hospital (28 km)  
46 General Hospital Dr, Stratford, ON  
1 519-272-8210



### Mount Elgin

Mt. Elgin Ball Park  
333204 Plank Line, Mt. Elgin, ON

#### Nearest Hospitals

Alexandra Hospital (12 km)  
29 Noxon St, Ingersoll, ON  
1 519-485-1700

Tillsonburg District Memorial Hospital (12 km)  
167 Rolph St, Tillsonburg, ON  
1 519-842-3611



### New Hamburg

New Hamburg Community Centre  
251 Jacob St., New Hamburg, ON

#### Nearest Hospitals

St. Mary's Hospital (21 km)  
911 Queen's Blvd, Kitchener, ON  
1 519-744-3311

Stratford General Hospital (26 km)  
46 General Hospital Dr, Stratford, ON  
1 519-272-8210

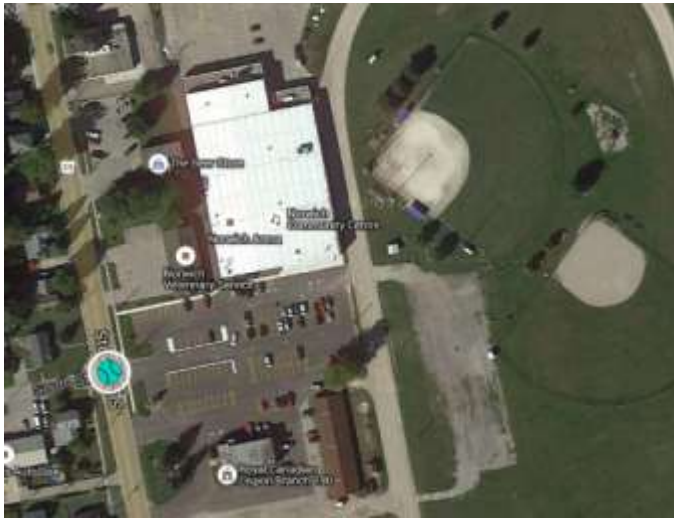


## Norwich

Norwich Community Centre  
59 Stover Street South, Norwich, ON

### Nearest Hospitals

Tillsonburg District Memorial Hospital (21 km)  
167 Rolph St, Tillsonburg, ON  
1 519-842-3611  
Woodstock General Hospital (26 km)  
310 Juliana Dr, Woodstock, ON  
1 519-421-4211



## Otterville

Otterville Park  
3 North Street E., Otterville, ON

### Nearest Hospitals

Tillsonburg District Memorial Hospital (16 km)  
167 Rolph St, Tillsonburg, ON  
1 519-842-3611  
Woodstock General Hospital (31 km)  
310 Juliana Dr, Woodstock, ON  
1 519-421-4211





## Paris

Lions Park

90 Laurel Street, Paris, ON

### Nearest Hospitals:

Willett Hospital (3 km) – restricted hours

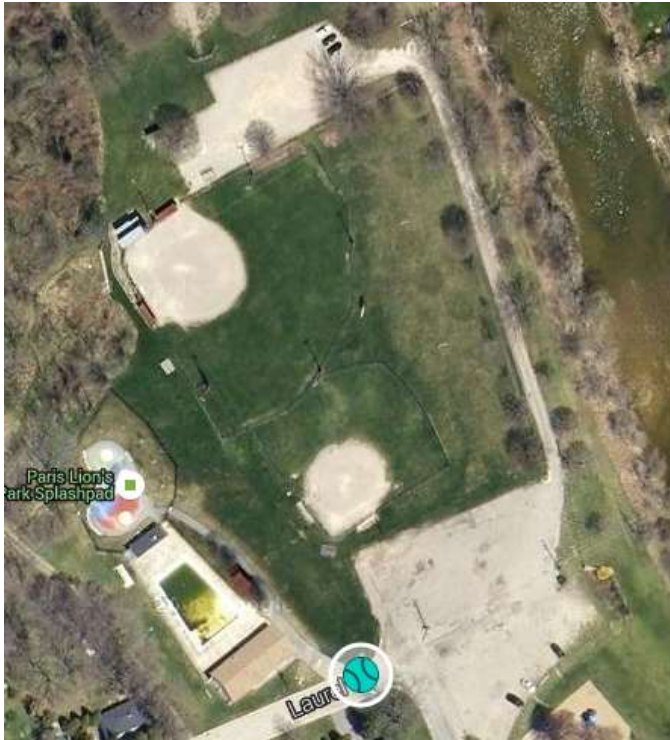
238 Grand River St N, Paris, ON

1 519-442-2251

Brantford General Hospital (12 km)

200 Terrace Hill St, Brantford, ON

1 519-751-5544



## Paris

Green Lane

8 Green Lane, Brant, ON

### Nearest Hospitals:

Willett Hospital (4 km) – restricted hours

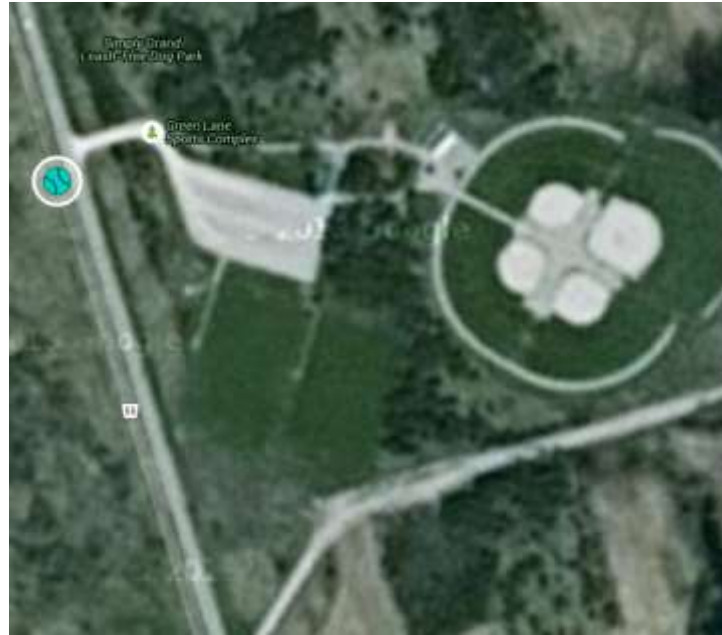
238 Grand River St N, Paris, ON

1 519-442-2251

Brantford General Hospital (10 km)

200 Terrace Hill St, Brantford, ON

1 519-751-5544



### Paris

Syl Apps Community Centre (Two Rivers Stadium)  
51 William St, Brant, ON

#### Nearest Hospitals:

Willett Hospital (2 km) – restricted hours

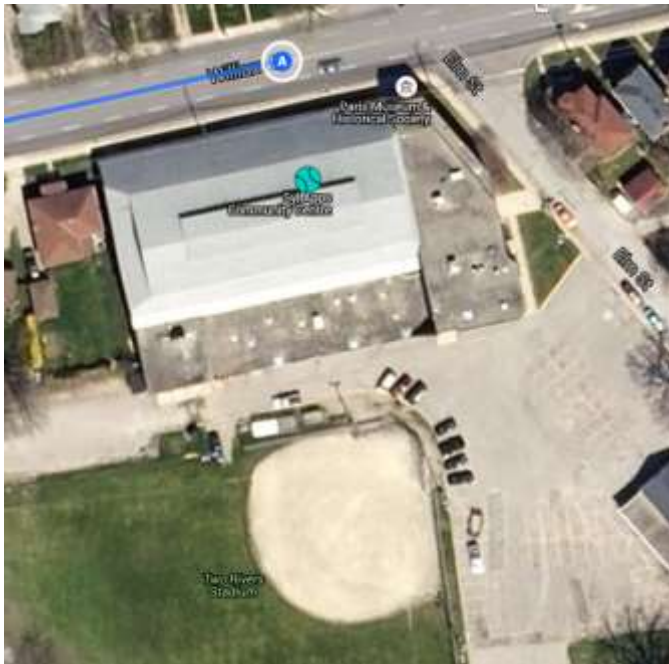
238 Grand River St N, Paris, ON

1 519-442-2251

Brantford General Hospital (10 km)

200 Terrace Hill St, Brantford, ON

1 519-751-5544



### Plattsville

Plattsville Ball Park  
68 Mill St., Plattsville, ON

#### Nearest Hospitals:

St. Mary's Hospital (25 km)

911 Queen's Blvd, Kitchener, ON

1 519-744-3311

Cambridge Memorial Hospital (30 km)

700 Coronation Blvd., Cambridge, On

519-621-2330





### Princeton

Princeton Ball Park  
25 Elgin St. W., Princeton, ON

#### Nearest Hospitals:

Willett Hospital (15 km) – restricted hours

238 Grand River St N, Paris, ON

1 519-442-2251

Woodstock General Hospital (22 km)

310 Juliana Dr, Woodstock, ON

1 519-421-4211

Brantford General Hospital (26 km)

200 Terrace Hill St, Brantford, ON

1 519-751-5544



### Saint George (St. George)

St. George Community Centre  
7 Gaukel Dr, St. George, ON

#### Nearest Hospitals:

Willett Hospital (15 km) – restricted hours

238 Grand River St N, Paris, ON

1 519-442-2251

Brantford General Hospital (26 km)

200 Terrace Hill St, Brantford, ON

1 519-751-5544



**Saint George (St. George)**

King William Park

49 King William St., Saint George, ON

**Nearest Hospitals:**

Willett Hospital (15 km) – restricted hours

238 Grand River St N, Paris, ON

1 519-442-2251

Brantford General Hospital (26 km)

200 Terrace Hill St, Brantford, ON

1 519-751-5544

**Saint George (St. George)**

Harrisburg Park

17 German School Rd., Saint George, ON

**Nearest Hospitals:**

Willett Hospital (15 km) – restricted hours

238 Grand River St N, Paris, ON

1 519-442-2251

Brantford General Hospital (26 km)

200 Terrace Hill St, Brantford, ON

1 519-751-5544



**Saint Marys (St. Marys)**

Solis Park

317 James St. S., St. Marys, ON

**Nearest Hospitals:**

St Marys Memorial Hospital (2 km)

267 Queen St W, St. Marys, ON

Stratford General Hospital (20km)

46 General Hospital Dr, Stratford, ON

1 519-272-8210

**Saint Marys (St. Marys)**

Teddys Field

285 Water St S, St. Marys, ON

**Nearest Hospitals:**

St Marys Memorial Hospital (2 km)

267 Queen St W, St. Marys, ON

Stratford General Hospital (20km)

46 General Hospital Dr, Stratford, ON

1 519-272-8210





## Shakespeare

Shakespeare Ball Park  
3976 Galt St., Perth East, ON

### Nearest Hospitals:

Stratford General Hospital (13 km)  
46 General Hospital Dr, Stratford, ON  
1 519-272-8210

Woodstock General Hospital (31 km)  
310 Juliana Dr, Woodstock, ON  
1 519-421-4211



### Sheffield

Sheffield Ball Park

1225 Sheffield Rd., Hamilton, ON

#### Nearest Hospitals:

Cambridge Memorial Hospital (12 km)  
700 Coronation Blvd., Cambridge, ON  
519-621-2330

Brantford General Hospital (26 km)  
200 Terrace Hill St, Brantford, ON  
1 519-751-5544



### Springfield

Malahide Community Place

12105 Whittaker Rd., Springfield, ON

#### Nearest Hospitals:

Tillsonburg District Memorial Hospital (19 km)  
167 Rolph St, Tillsonburg, ON  
1 519-842-3611

Alexandra Hospital (28 km)  
29 Noxon St, Ingersoll, ON  
1 519-485-1700



## Springford

Springford Ball Park

432 Main St. West, Otterville, ON

### Nearest Hospitals:

Tillsonburg District Memorial Hospital (10 km)

167 Rolph St, Tillsonburg, ON

1 519-842-3611

Alexandra Hospital (26 km)

29 Noxon St, Ingersoll, ON

1 519-485-1700



### Stoney Creek

Ferris Park

342 Hemlock Ave, Stoney Creek, ON

#### Nearest Hospitals:

St Josephs Community Health (5 km)

2757 King St E, Hamilton, ON

1 905-573-7777

Hamilton General Hospital (14 km)

237 Barton St E, Hamilton, ON

1 905-521-2100

### Stoney Creek

Valley Park

970 Paramount Dr, Stoney Creek, ON

#### Nearest Hospitals:

St Josephs Community Health (8 km)

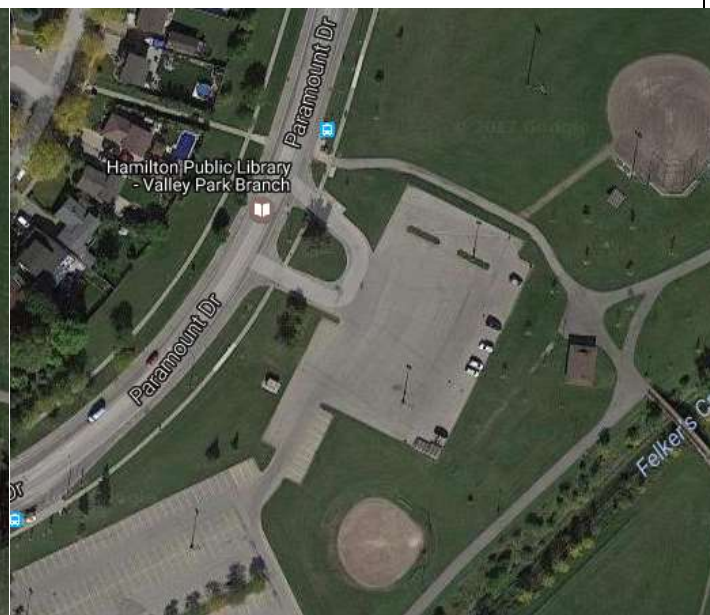
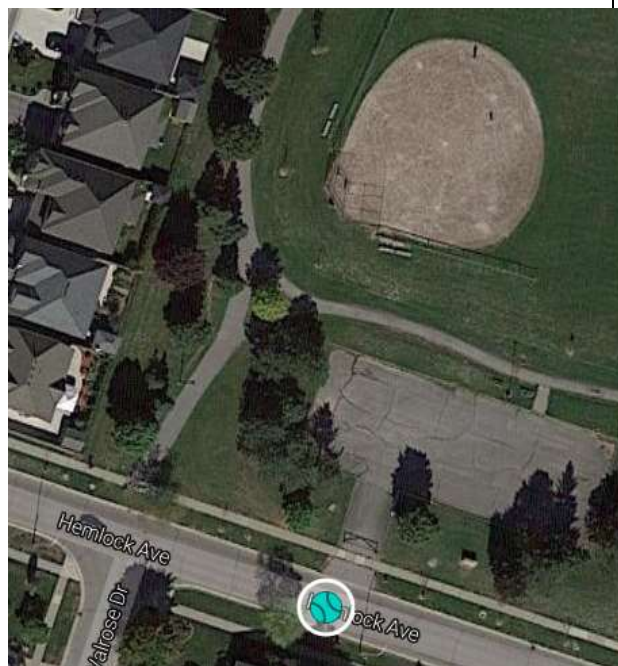
2757 King St E, Hamilton, ON

1 905-573-7777

Hamilton General Hospital (18 km)

237 Barton St E, Hamilton, ON

1 905-521-2100





### Sweaburg

Lions Park

474265 County Rd 41, Sweaburg, ON

#### Nearest Hospitals:

Woodstock General Hospital (5 km)

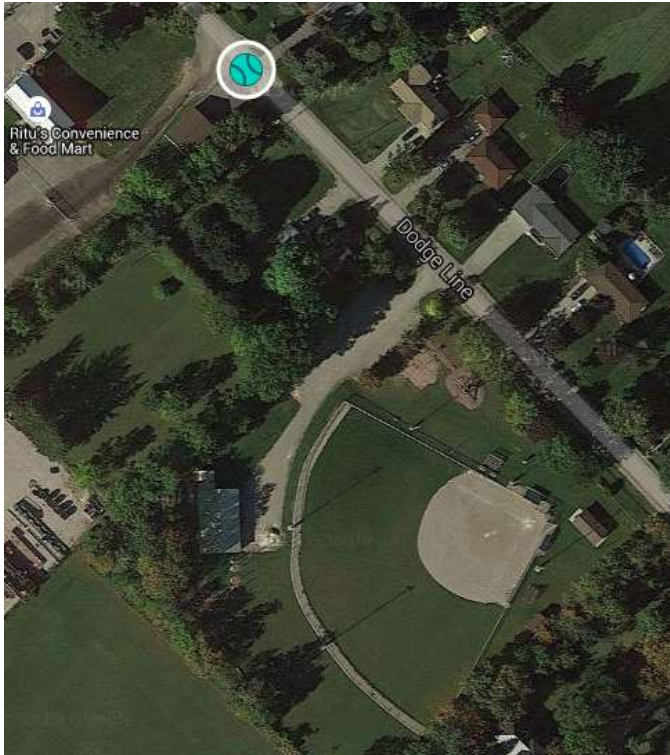
310 Juliana Dr, Woodstock, ON

1 519-421-4211

Alexandra Hospital (13 km)

29 Noxon St, Ingersoll, ON

1 519-485-1700



### Sweaburg

Tommy Williams Park

474465 Dodge Line, Sweaburg, ON

#### Nearest Hospitals:

Woodstock General Hospital (6 km)

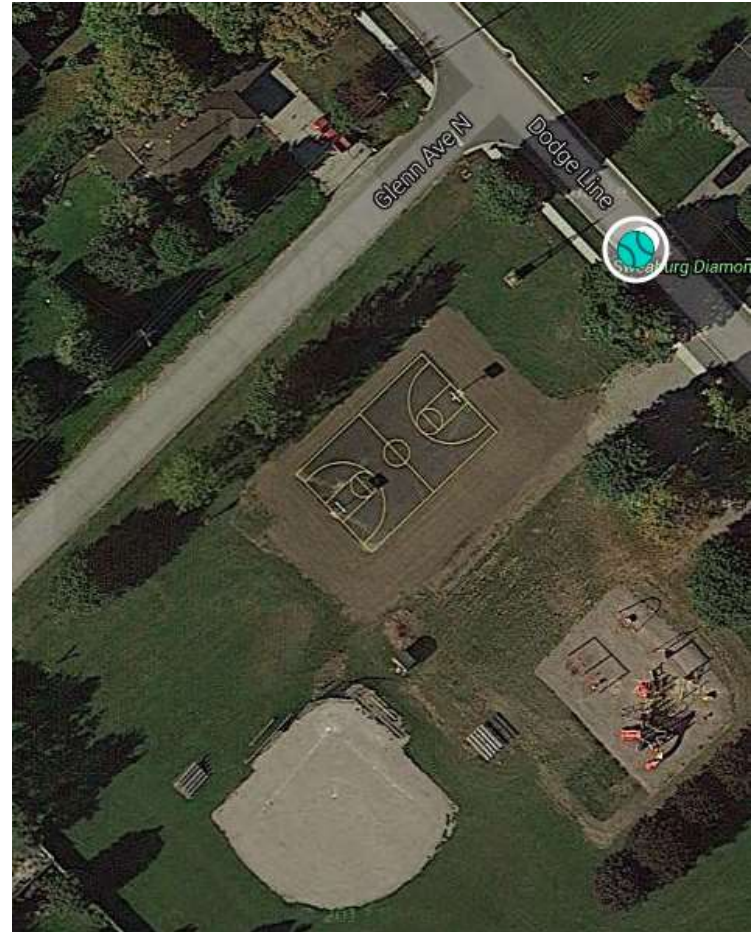
310 Juliana Dr, Woodstock, ON

1 519-421-4211

Alexandra Hospital (13 km)

29 Noxon St, Ingersoll, ON

1 519-485-1700





### Tavistock

Optimist Park

296 Woodstock St S., Tavistock, ON

Nearest Hospitals:

Stratford General Hospital (17 km)

46 General Hospital Dr, Stratford, ON

1 519-272-8210

Woodstock General Hospital (25 km)

310 Juliana Dr, Woodstock, ON

1 519-421-4211



### Tavistock

Queen's Park

1 Adam St., Tavistock, ON

Nearest Hospitals:

Stratford General Hospital (17 km)

46 General Hospital Dr, Stratford, ON

1 519-272-8210

Woodstock General Hospital (26 km)

310 Juliana Dr, Woodstock, ON

1 519-421-4211



266 Main St N, Waterdown, ON

Hamilton General Hospital (16 km)

1 905-521-2100

2089 Dundas St W, Oakville, ON

1 905-845-2571



## Hillside Park

352 Marsland Dr., Waterloo, ON

Grand River Hospital (20 km)

901 King St W, Kitchener, ON

St. Mary's Hospital (28 km)

911 Queen's Blvd, Kitchener, ON

1 519-744-3311



**Zurich**

Zurich Ball Park  
28 Main St., Zurich, ON

**Nearest Hospitals:**

South Huron Hospital (20 km) – Restricted hours

24 Huron St W, Exeter, ON

519-235-2700

Clinton General Hospital (30 km)

98 Shipley St, Clinton, ON

1 519-482-3447

Stratford General Hospital (66 km)

46 General Hospital Dr, Stratford, ON

1 519-272-8210



## **EAP Appendix B**

### **Player Medical Forms**





## **EAP Appendix C**

### **Injury Reports**

